



# INSTALLATION GUIDE

# TABLE OF CONTENTS

3. INSTALLATION CHECKLIST

4. PROJECT PREP

5. INSTALLATION INSTRUCTIONS

14. MAINTENANCE

# INSTALLATION TOOL CHECKLIST

Prepare for your window film project with our tool and supply checklist. You may have some of the common household items on hand, while others are more specific installation tools for window film. We offer an Installation Tool Kit that provides all the tools you need to professionally install the film.

## Household Items

---

Scissors

Paper towels

Drop cloth or towels for floor

Cellophane Tape

## Installation Kit Tools

---

Rubber squeegee

Razor blade scraper

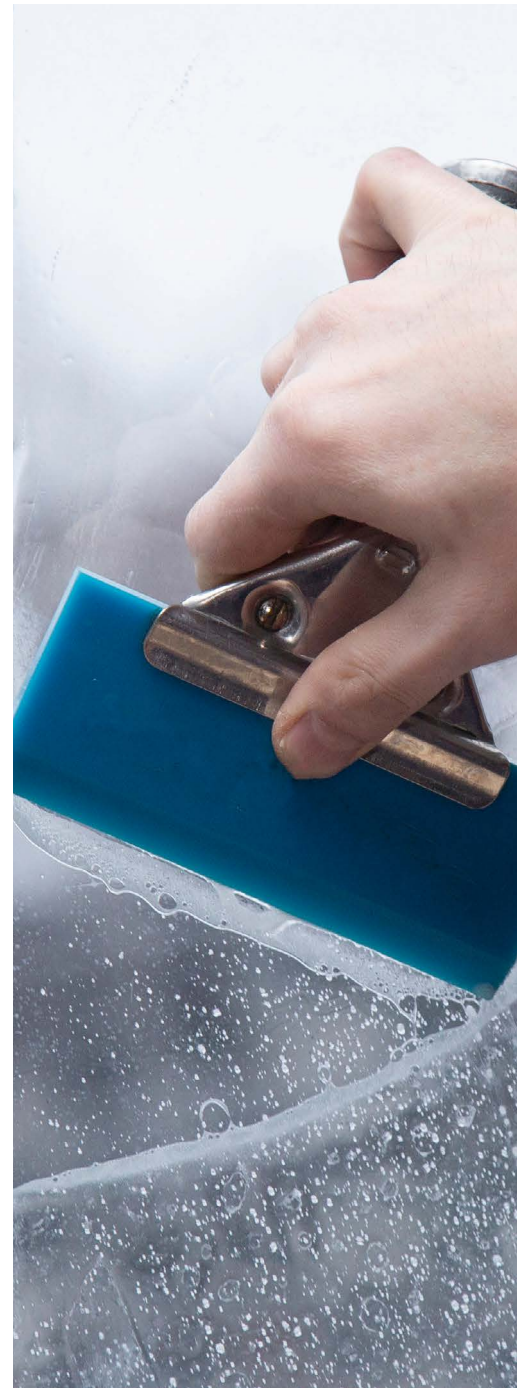
Utility knife

Yellow film pencil

Spray bottle

Slip-Tack solution

[ORDER NOW](#)



# HOW TO PREP

## for your window film project

### GATHER ALL MATERIALS



The first step to your new upgraded windows is to order your film and installation kit. Everything can be found on [windowfilm.com](http://windowfilm.com). We recommend ordering one week before you want to install to ensure it arrives in time and you have an opportunity to review instructions.

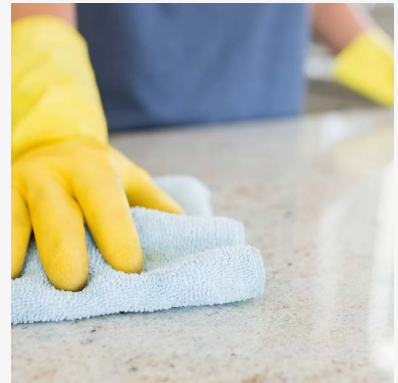
Use the checklist on page 4 to ensure you have all materials on hand for a successful project.

### PREPARE YOUR SPACE

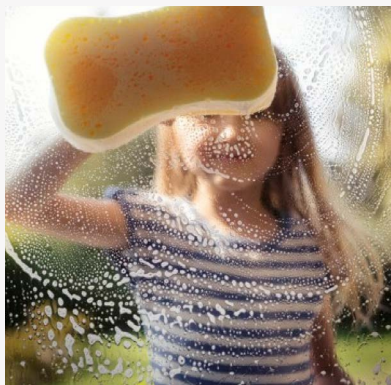
All DIYers understand that good preparation is key to a successful project. Window film installation is no different. The cleaner your space is, the better the results.

First, ensure you have a clear, flat area to lay out and scissor trim your film. A counter top, dining or folding table are all great choices. Make sure the surface is clean before laying out film.

Next, for optimal results, make sure the work space and area around the window is clean and free of any pet hair, dust, or debris that could attach to the film during install. A good dusting and vacuuming typically do the trick



### CLEAN YOUR WINDOWS



To make the installation as easy as possible, it's a good idea to clean your windows prior to install day (you will do a detailed clean again the day of the install).

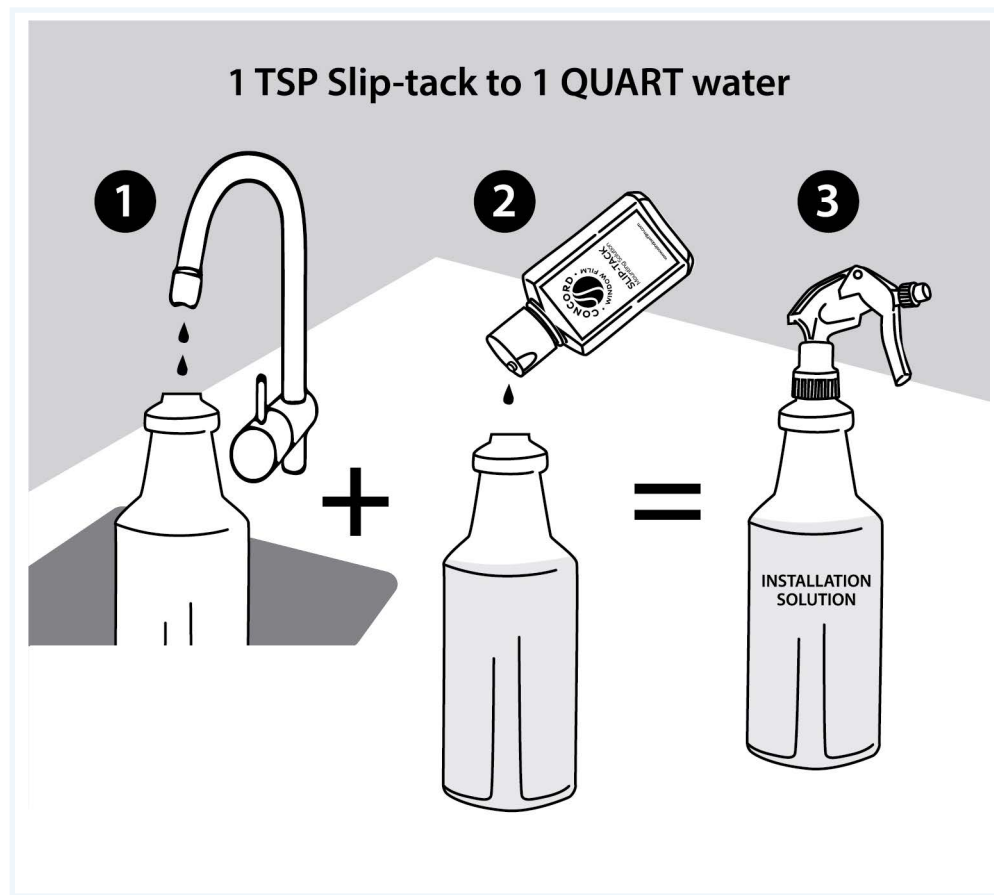
Take time to clean the glass as well as any dirt or dust on the interior window frames and sill. The goal is to remove any debris that could get trapped under the film and compromise the installation.

It's helpful if the outside of the windows are also clean. This makes it easier to see if the inside glass is ready for film.





# Prepare for the Project



Your first step is to prepare for your installation project.

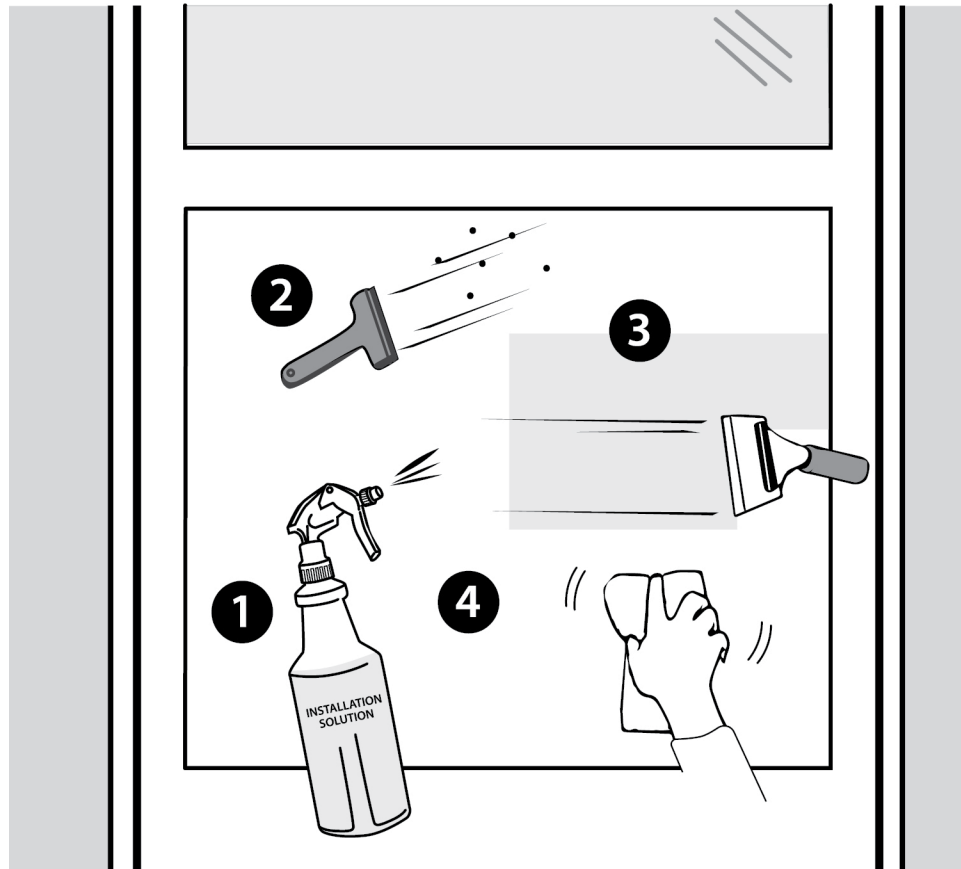
Gather your tools from the checklist on the left and clear off a table or counter space to lay out the film.

Next prepare the installation solution. The solution is needed to activate the dry adhesive on your new ComforTech™ film, is used to clean your windows in preparation for your film, and helps keep everything gliding easily as you install.

To make the solution, fill the spray bottle with water up to the FILL RING line. Then put 1 teaspoon (tsp), about twenty drops, of the Slip-Tack mounting solution into the bottle, replace the top, and gently shake until mixed. The approximate mixture would be one teaspoon to a quart of water, but you do not have to be exact.



## Clean the Window(s)



Next prepare the window by cleaning it. Start by spraying the window with the prepared solution and then scraping the glass clean using the razor blade scraper. Take care not to cut yourself while using the razor blade scraper.

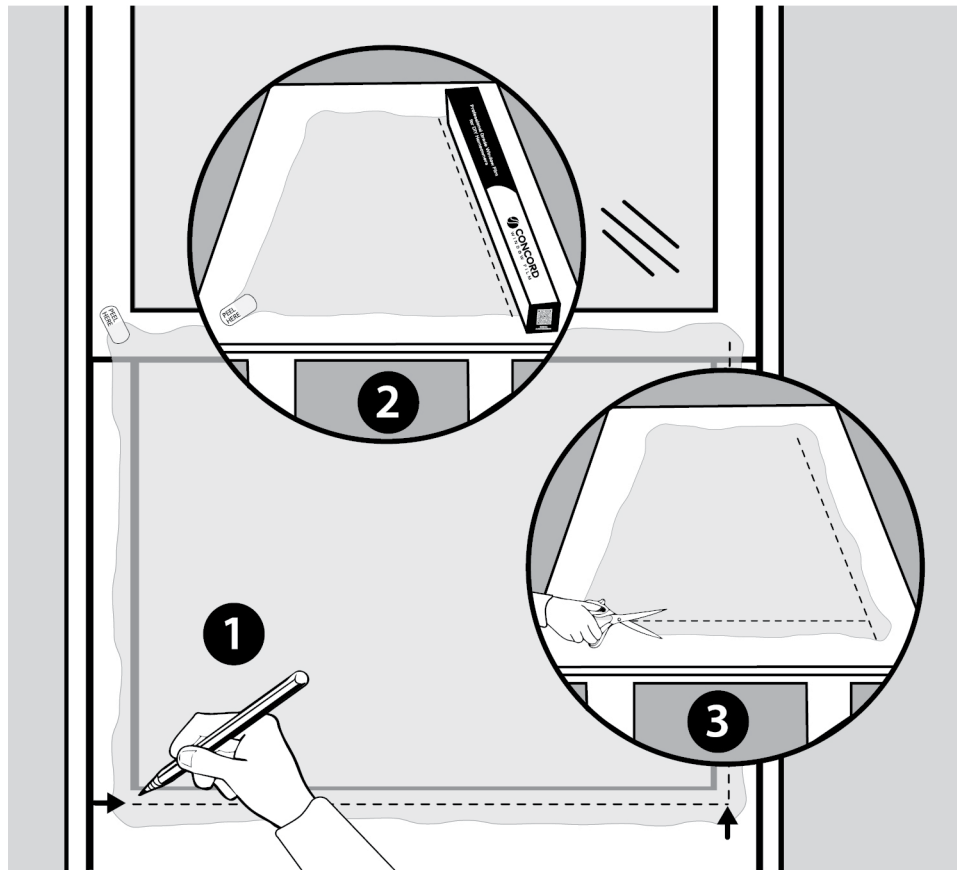
After all the dirt has been removed with the razor, wet the window again and squeegee the window dry. Using overlapping strokes squeegee the entire window being sure to wipe the squeegee clean with a paper towel between strokes to remove any accumulated dirt.

Finally, wipe the edges of the glass dry with a clean paper towel. Most of the dirt and contamination that makes its way under window film comes from the edges of the glass, try to get them as clean as possible.

**PRO TIP:** *It's helpful if the outside of the window is also cleaned so you can see whether the inside is ready for film.*



## Trim Film to Size



Place a piece of film on the window covering the glass where there is at least a 1" overlap space on the top and left edges.

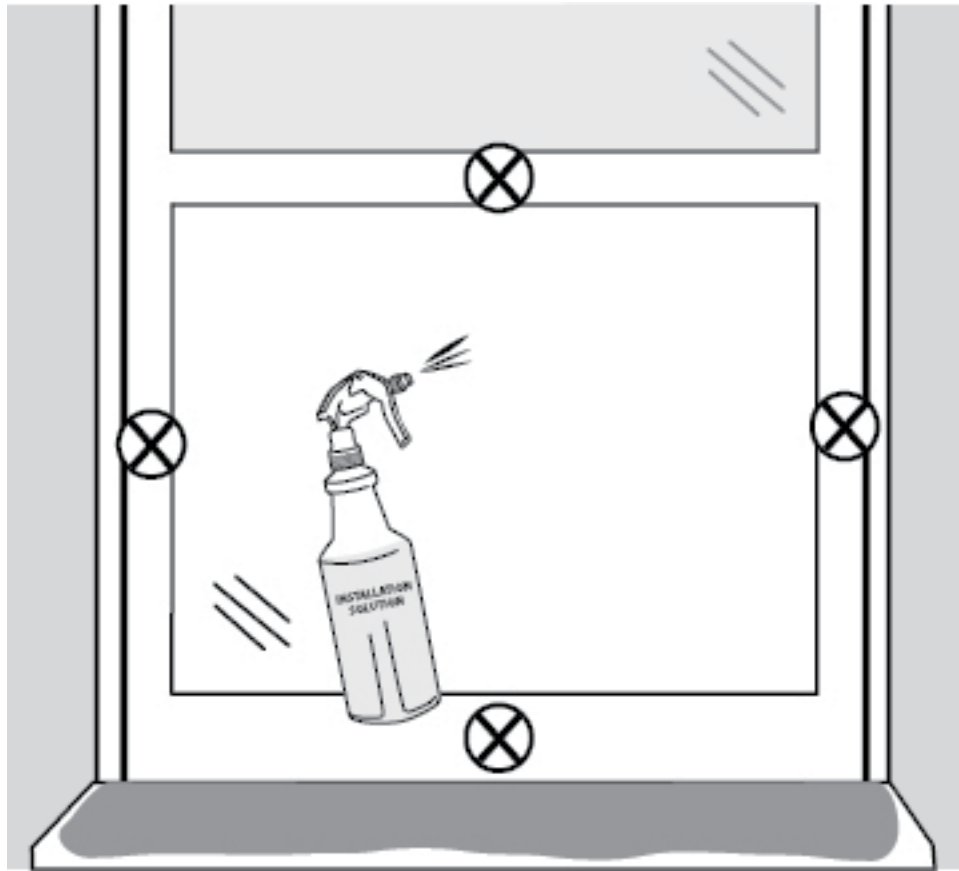
Now, holding the film in place, mark the right and bottom edges of the film with the yellow film marker about 1" beyond the glass edge for trimming.

On the prepared clean, flat surface, use the box as a straight edge to draw lines with the yellow marker to mark your scissor cut lines. The marked film size should provide you with a piece of film that has a 1" overlapping border to the glass edge for each of the four sides.

With a pair of scissors, cut the film to size along the straight cut lines.



## Wet the Glass



Open the window slightly and place a towel underneath the sash, covering the sill. Close the window on the towel, securing it in place. Place another towel on the floor below the window to catch any additional liquid.

Then spray the glass completely with the solution being careful not to leave any dry spots. Center the spray on the window while avoiding spraying near the edges of the window.

**PRO TIP:** Wet the window thoroughly, but do not spray any water directly on any of the outer edges. You do not want to flush out any dirt or grit which may still be embedded in the edges.





## Remove the Liner



Every piece of ComforTech™ window film has a clear polypropylene liner protecting the film's adhesive.

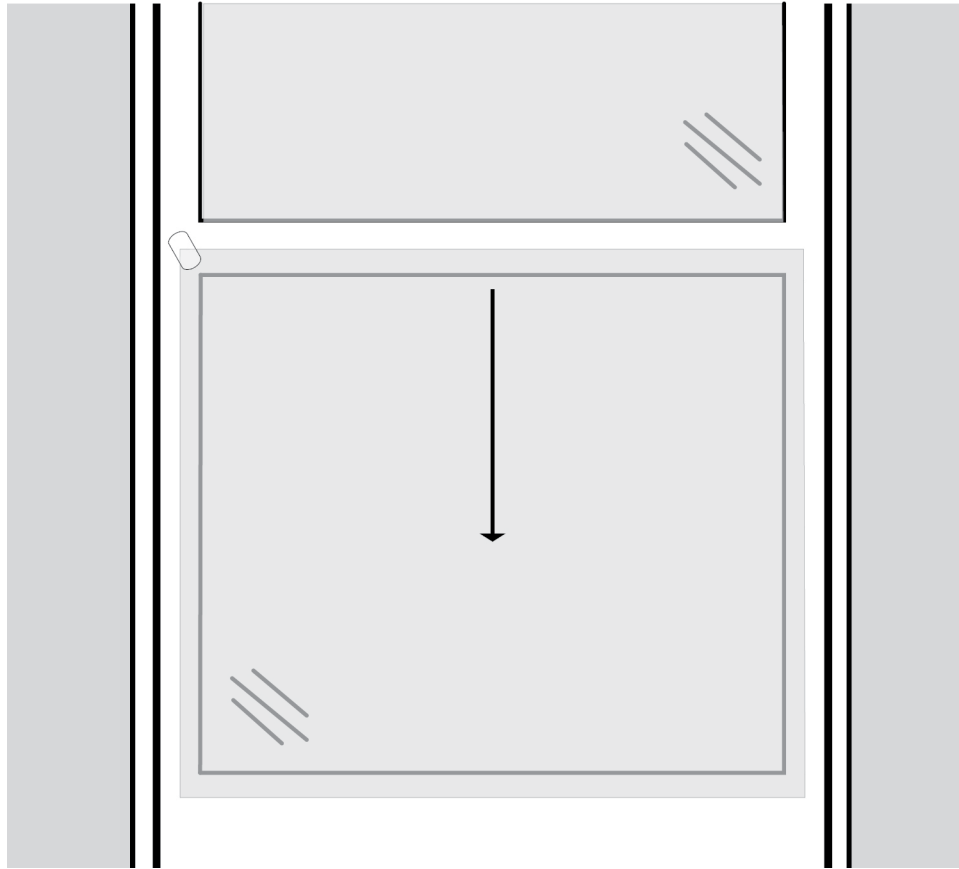
To set the film up for installation, the liner needs to be removed. A set of tabs are attached to the film to allow you to separate the film from the liner. To remove the liner, pull the tab labeled “PEEL HERE” (this is the liner side of the film) and begin the separation of the liner from the film.

Once the liner begins to separate from the film, place the film on the wetted window with the liner side out. The film side should temporarily adhere to the wet window. While holding the film in place on the window, remove the remaining liner while spraying the installation solution on the exposed adhesive side of the film. Once you remove the entire liner, please make sure the entire adhesive side of the film is thoroughly wetted with the installation solution.

**PRO TIP:** This step is easier if you have another person to help you. They can help hold the film as you pull the liner away and spray the film.



## Apply the Film



Now you will flip the film so that the adhesive side is facing the glass. As a reminder, the non-adhesive side of the film will be the one with the tab still attached.

To do this, carefully pick up the left edge of the film with your right hand and remove the film while using your left hand to grasp the other side of the film. Then flip the film so that the adhesive side is now facing the glass.

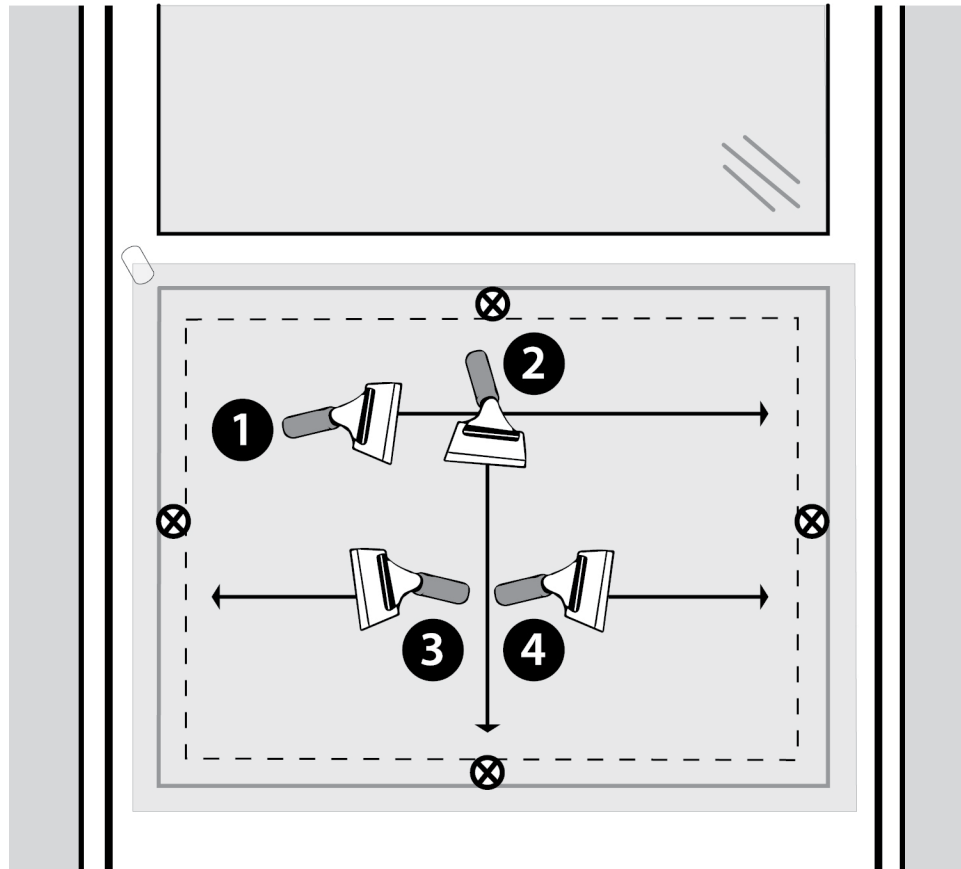
Make sure that you apply a generous amount of installation solution to ensure that film slides easily on the glass.

Place the adhesive side onto the glass and allow the film to slide onto the windowpane.

**PRO TIP:** To avoid transferring oil from your hands onto the exposed film, give your hands a light spray with the installation solution prior to handling the exposed film.



# Smooth Film in Place



Once film is in position, completely wet the outside of the film with the solution again.

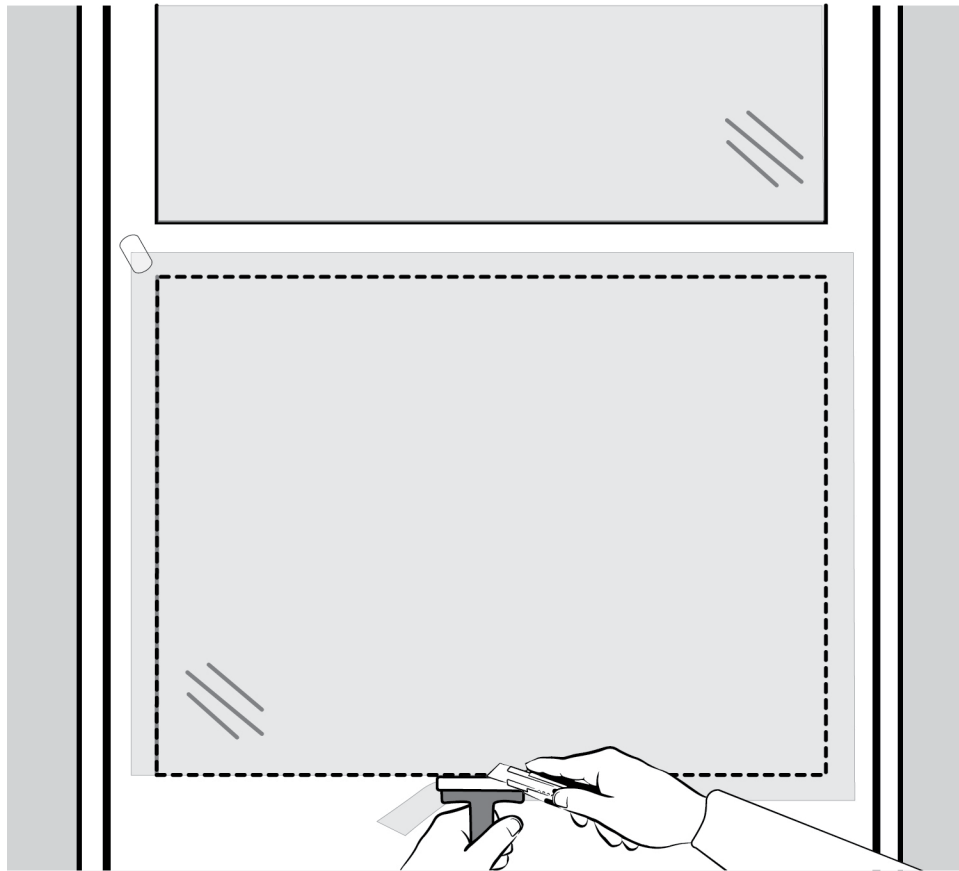
To set film, begin squeegeeing the film by making a “T”. Start by making a horizontal stroke across the top edge 2” below the glass and then a vertical stroke down the center of the film stopping 2” from the bottom glass edge. Be sure to push the squeegee across the film; do not pull it.

After creating the “T” go back to the top and continue squeegeeing the film using horizontal strokes that start from the center and go to the left and then right. Continue to be careful not to squeegee to the edge of the film, leaving a two-inch border.

**PRO TIP:** DO NOT SQUEEGEE TO THE EDGE OF THE FILM. If you squeegee all the way to the edge before trimming, you risk causing dirt and grit to get sucked back under the film. Squeegee the entire window, but leave a two-inch border around all edges.



# Trim the Film Edges



Take the squeegee and now push the film to the edges of the window frame.

Then, starting in the top left corner, using the covered scraper as a guide, place the utility knife between the covered scraper and the window frame and begin trimming away the excess film as close to the window frame as possible. Trim the remaining three sides with the same technique.

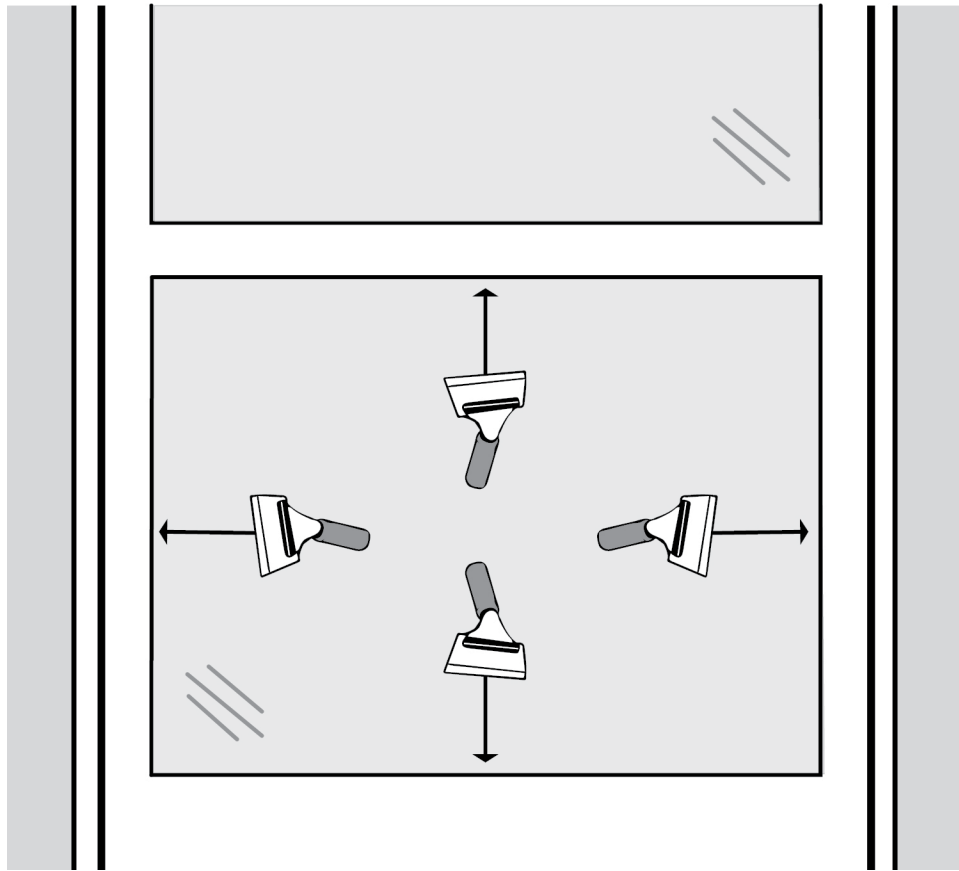
You may notice there is water still under the edge of the film. You will squeegee this water out after the film is completely trimmed.

Once the film is trimmed, carefully pull off the excess. Make sure that as you remove the excess, you are pulling it away from the window edge. Do this carefully so you do not rip the film on the glass. If there is still excess film at the edge of the frame, carefully use the knife to trim it. Respray the outside of the film and squeegee again.

*PRO TIP: Take your time trimming the film. Make sure the film is pushed all the way to the edge of your frame with the squeegee, and place the knife as close to the frame as possible.*



# Squeegee the Film Dry



Now you will squeegee all the way to the edge to seal the film.

If the squeegee does not glide easily over the film, spray the outside of the film with more installation solution to lubricate the motion of the squeegee. As before, use pushing strokes from the center of the glass to the edge, moving from top to bottom.

Next, thoroughly re-wet the film and squeegee the entire film again with push movements. Apply enough pressure to ensure you remove any excess water between the film and the glass. Be sure to apply enough solution so the squeegee glides easily.

The last important step is to dry the edges of the film. Wrap the squeegee in a folded paper towel and starting 5-6" from the edge, squeegee toward the edge. Any remaining water left under the film should be pushed out at the edge and absorbed by the paper towel. Repeat if necessary to dry the edges. Once dry, installation is complete.

You may notice some small water bubbles under the film, this is normal, and they will disappear as the water has time to evaporate.

# HOW TO MAINTAIN YOUR NEW WINDOW FILM

- ComforTech™ Series film can take up to 30 days to fully cure, small water bubbles are common during the drying process, these will evaporate.
- Please refrain from cleaning your windows for the first 30 days.
- After that, you can clean your windows as you normally would with a soft, non-abrasive cloth and mild cleaning agent
- Enjoy the comfort of Concord ComforTech™ Ceramic Series Window Film for years to come!





SCAN FOR VIDEO  
INSTRUCTIONS



[www.windowfilm.com](http://www.windowfilm.com)